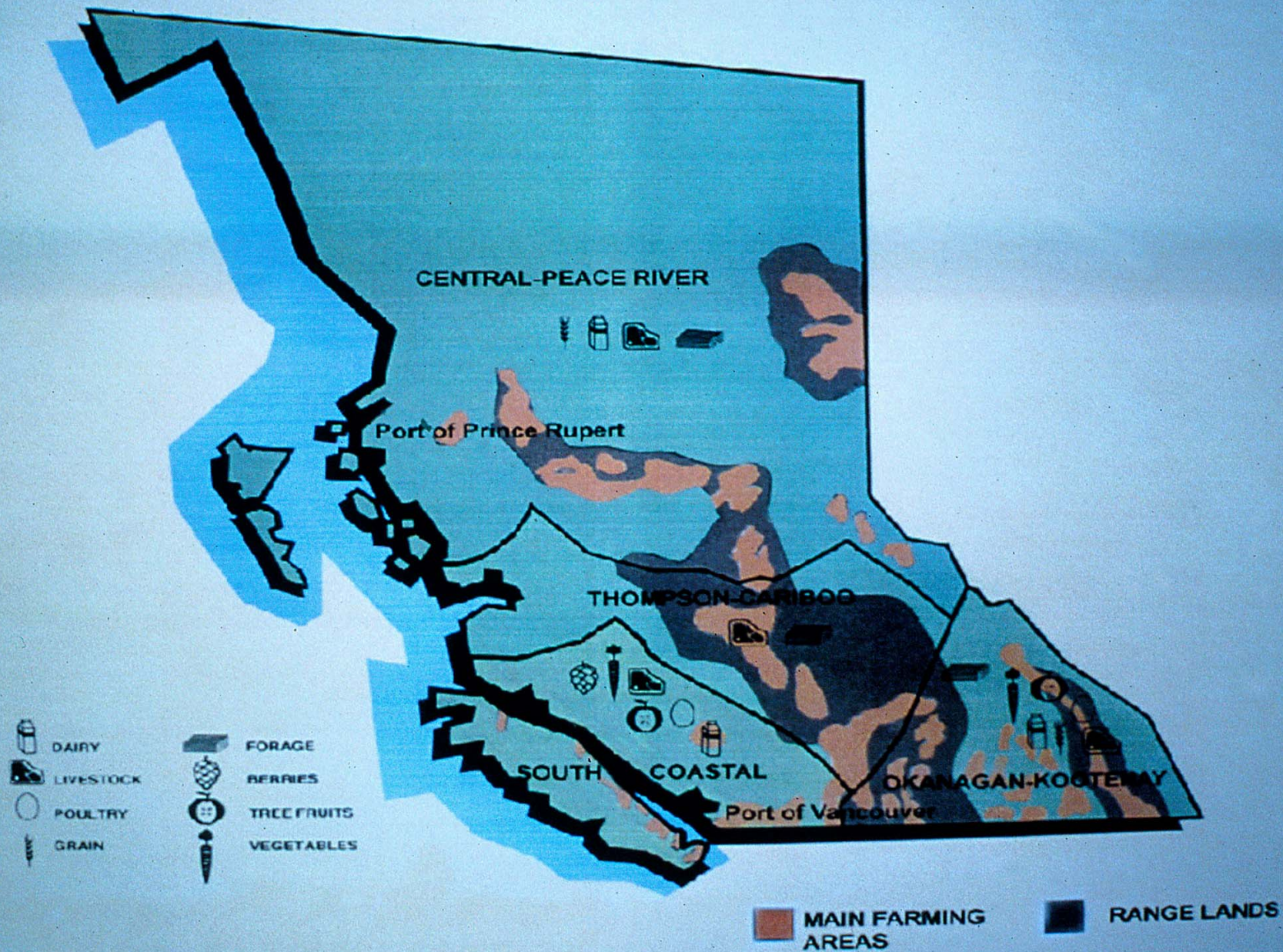


# Miscellaneous Classroom Material

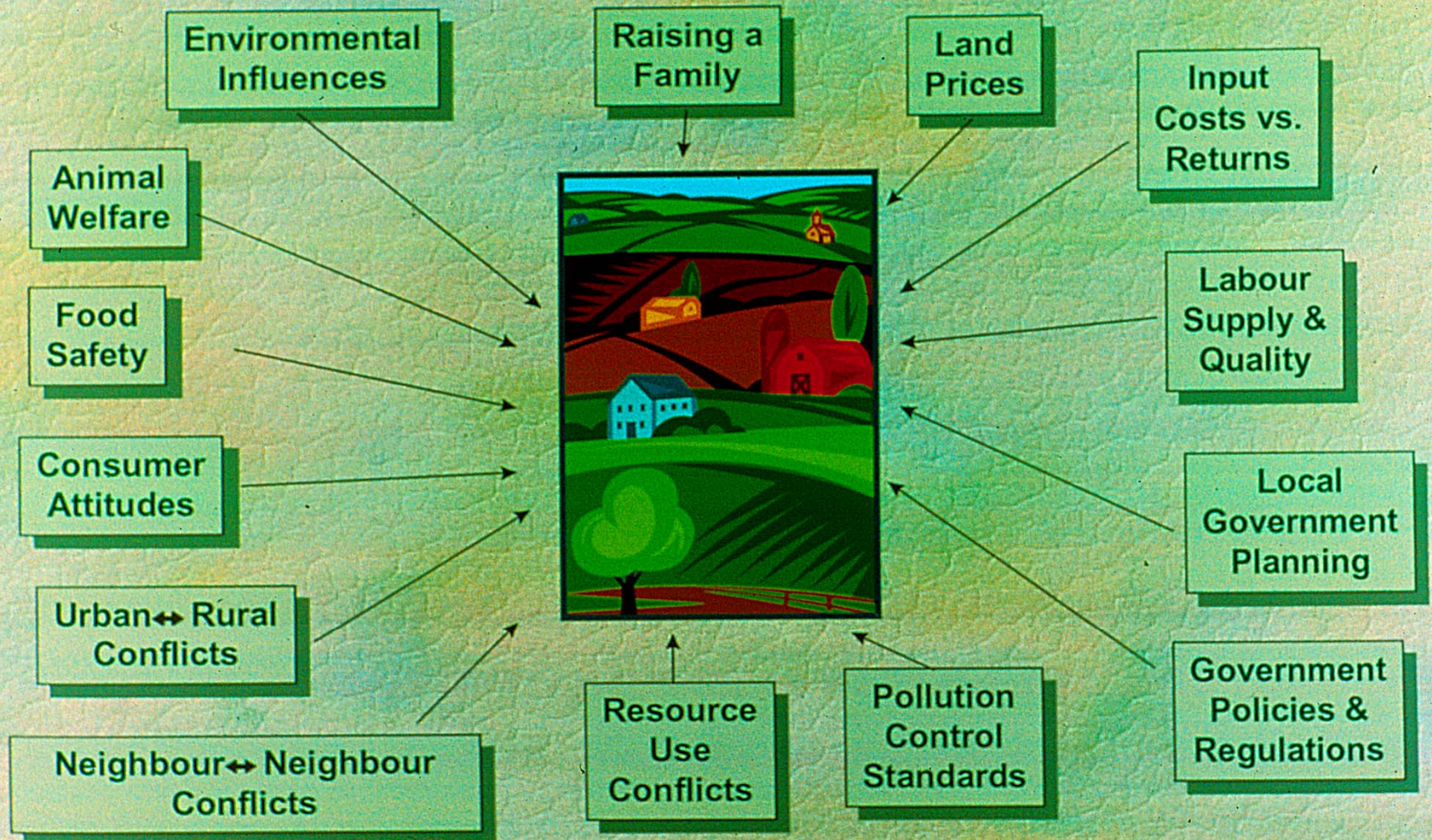


# BRITISH COLUMBIA'S MAIN FARMING AREAS





# The Farmer's Environment







100km/60mi

25km/16mi

U.S.A.



# Value of food industry to B.C.

- employs 1 in 7 British Columbians (238,000 jobs)
- supports 19,000 B.C. farm families
- \$1.5 billion in annual farm gate sales
- \$14 billion in annual food sales
- \$2.6 billion in world food exports



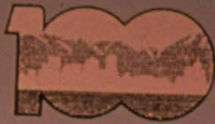
Ministry of Agriculture,  
Fisheries and Food



# Vancouver in the 1980s

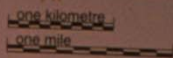
Land use c1989

- Commercial
- Apartment
- Housing
- Institutional
- Industrial
- Farm
- Park/Golf

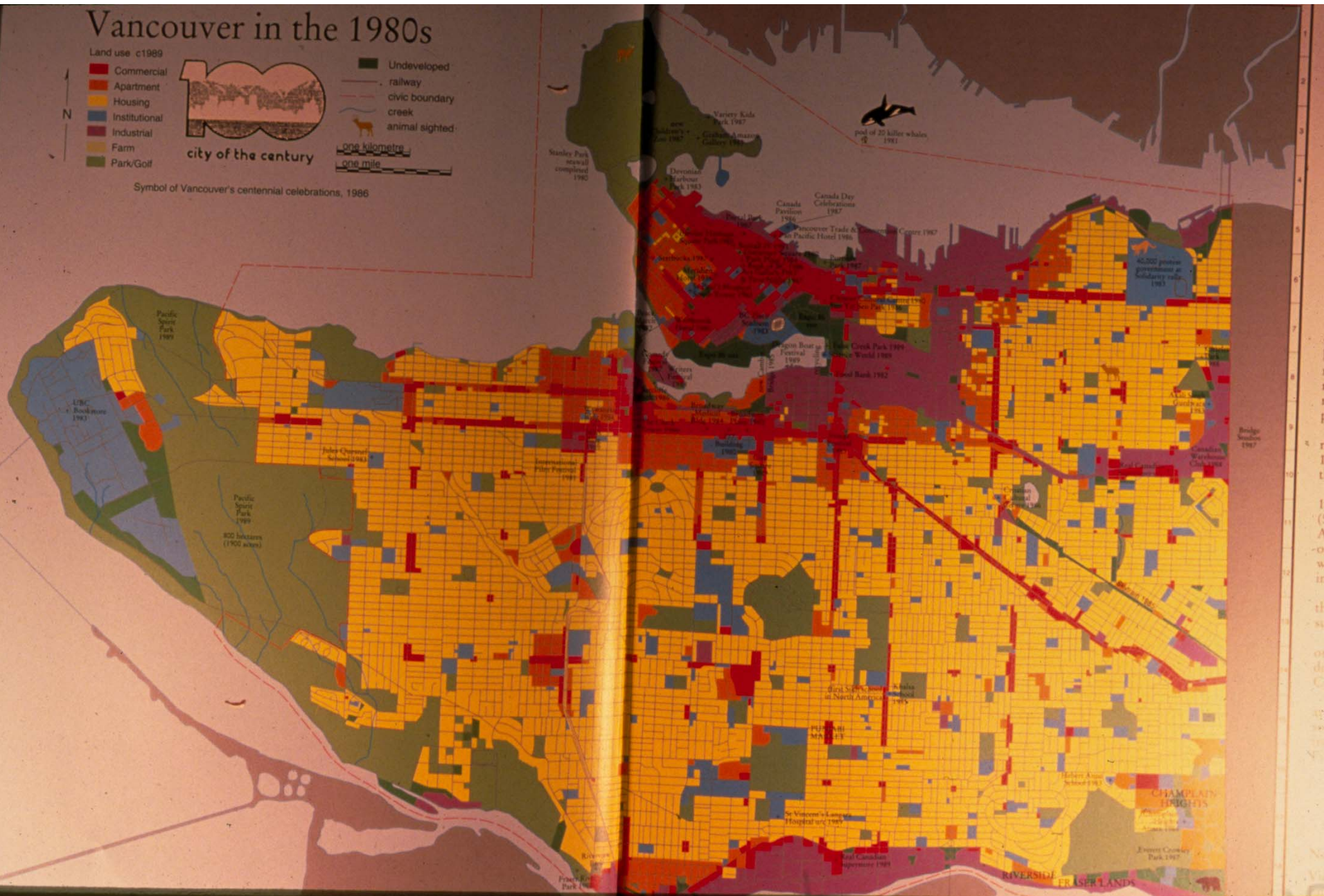


city of the century

- Undeveloped
- railway
- civic boundary
- creek
- animal sighted



Symbol of Vancouver's centennial celebrations, 1986





# Modern changes to farming

- Urban growth near farm areas
- New farm production technologies
- Increased farming intensity
- Changing public values
- Loss of connections to farming

