



Lesson 2

Urban Agricultural Conflict

Urban / Agricultural Conflicts

Two Types:

1. Micro – neighbour to neighbour

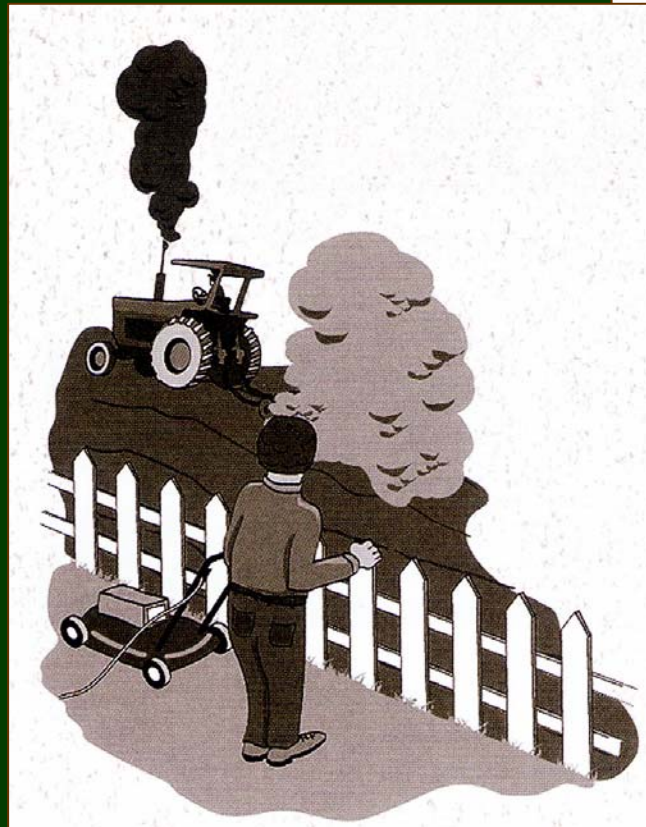


2. Macro – urban form & land use



Urban / Agricultural Conflicts

A two-way street ...



“Micro” Agricultural Conflicts → Urban

- Dust
- Odours
- Noise
- Hours of Operation



“Micro” Agricultural Conflicts → Urban

- Chemical Spraying



- Burning Emissions



- Farm Traffic



- Light

“Micro” Urban Conflicts → Agriculture

- Trespassing
- Theft / Vandalism / Damage
- Liability
- Safe movement of farm vehicles
- Restrictions on crop spraying & irrigation



“Micro” Urban Conflicts → Agriculture

- Pollutants in irrigation water
- Flooding
- Noises (livestock)
- Noxious Weeds



“Micro” Urban ↔ Agriculture Conflict

“The Motel and the Orchard”



Motel with air conditioning units
1.5 m from property line

Retro-fit



Cherry trees planted on & hanging over property line & propane cannons and chemical sprays used to protect cherries

• Chain-linked fence

• Irrigated hedge

• Row of trees removed & new trees planted

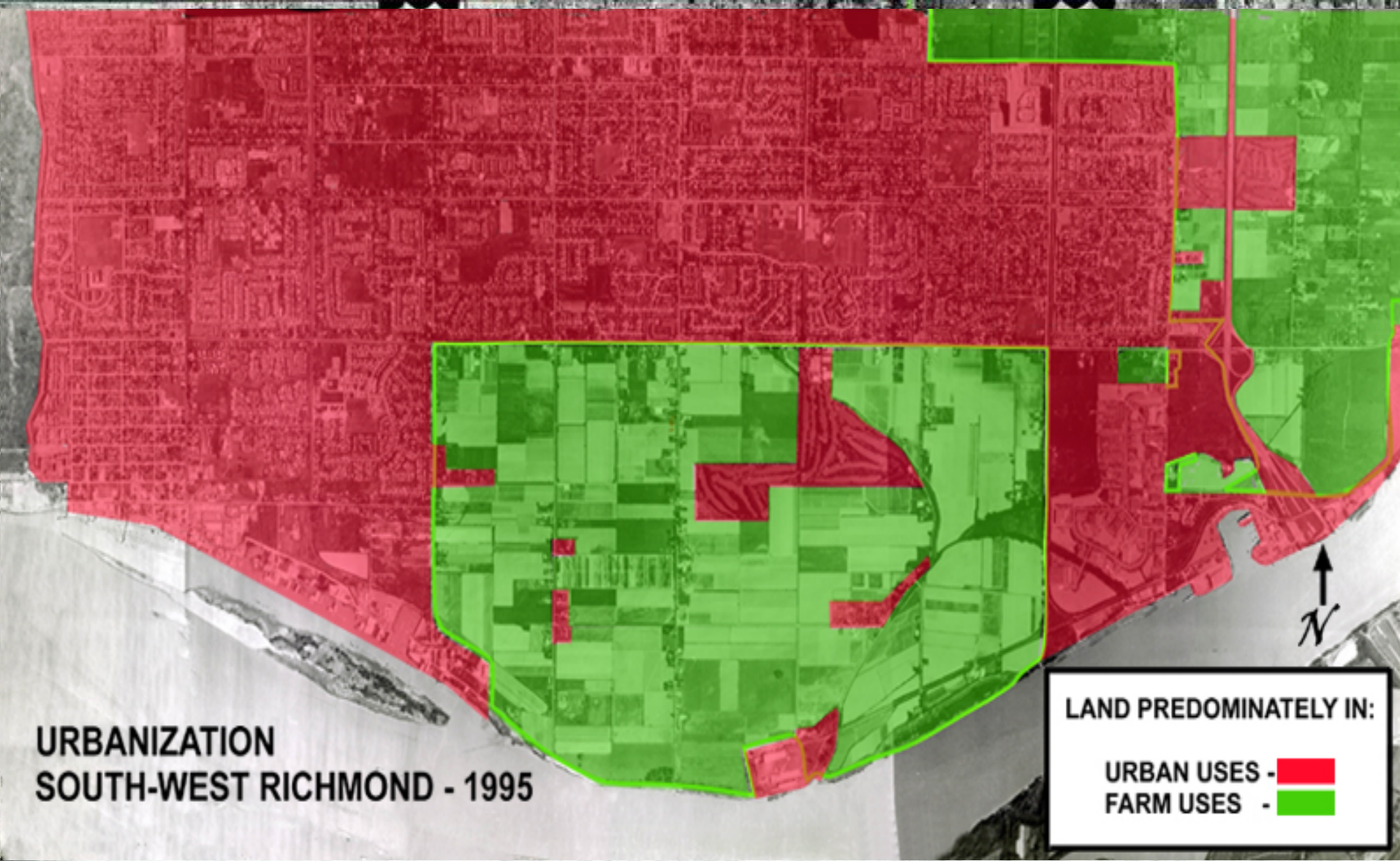


by Sharon Delvoye

“Before Urban Sprawl”









**URBANIZATION
SOUTH-WEST RICHMOND - 1995**

LAND PREDOMINATELY IN:

URBAN USES - 

FARM USES - 



A Critical Land Use Impact

- 12 million additional cars each year
- Requires 1 million hectares

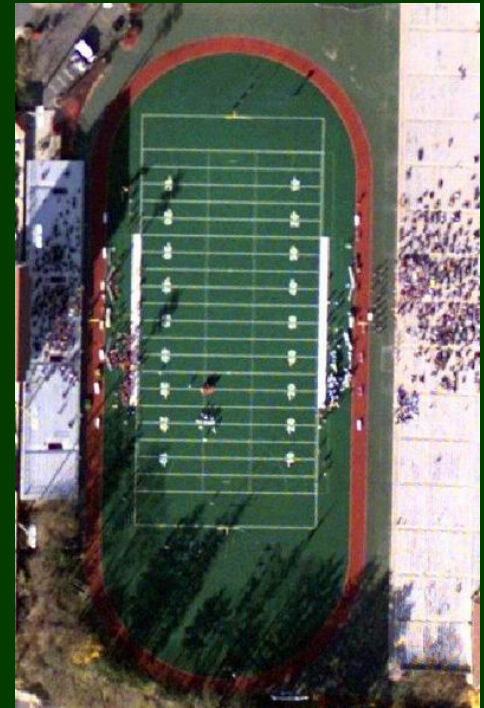


- Enough land to feed 9 million people

A Critical Land Use Impact



=



An aerial photograph of a large shopping center complex. The image shows several large, interconnected buildings with flat roofs, surrounded by vast parking lots filled with cars. A multi-lane highway runs through the center of the complex. In the background, there are residential areas, a park with a baseball field, and a body of water.

Temporary Storage of Automobiles Suburbs and Shopping Centres

1970 to 1990 in the U.S.

- 25,000 new shopping centres

7 parking
spaces per
vehicle

- One every 7 hours

Urban “Spill-Over” – *Into Agricultural Areas*

- Several impacts for agriculture
- Increases the potential for land use conflict



More Urban “Spill-Over” – Into Agricultural Areas



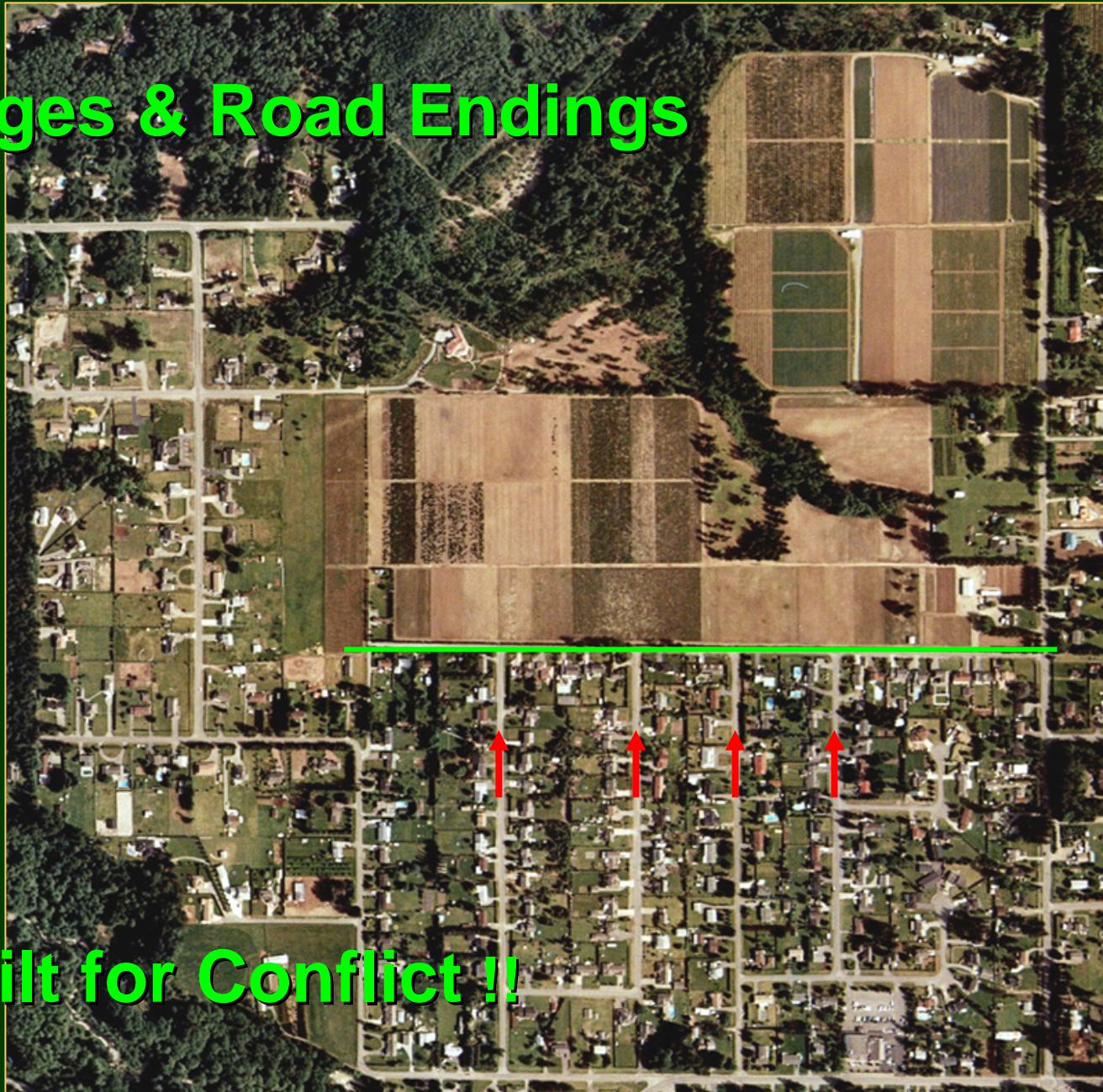
Estate Residential

Estate Residential – 7.5 hectares

- House / Landscaping / Driveways = 1.7 ha. (23%)
 - Corrals and Stable = 1.0 ha. (13%)
 - Farmed Fields = 4.8 ha. (64%)
- 36%



Edges & Road Endings



Built for Conflict !!

"Guess what I found in the blueberry patch?"



