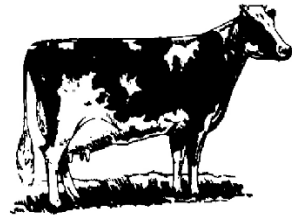




**Finding my Food: Agriculture Fish and Food in BC**

**Grades 2-5**

**My Name:** \_\_\_\_\_



**Instructions:**

**Complete this handout using the Agriculture, Fish and Food in BC Map.**

**[A] - Look at the Map Legend (top right side)**

**#1 - Name three vegetables that are grown in BC.**

1 \_\_\_\_\_

2 \_\_\_\_\_

3 \_\_\_\_\_

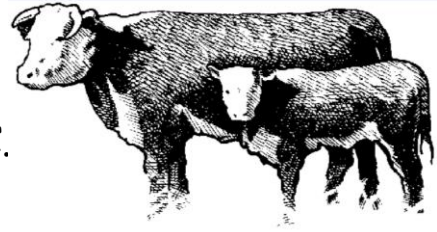
**#2 - Name three fruits that are grown in BC.**

1 \_\_\_\_\_

2 \_\_\_\_\_

3 \_\_\_\_\_





#3 - Name three animals that are raised in BC.

1 \_\_\_\_\_

2 \_\_\_\_\_

3 \_\_\_\_\_

**[B] - Look at Our Place in the World (top right side, under Legend)**

#1 - When looking at the map of Canada, is our province in the East or the West?

\_\_\_\_\_

#2 - How much of the land in BC is suitable for agriculture?

\_\_\_\_\_

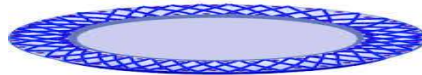
**[C] - Sketching**

#1 - Out of all the commodities grown in BC, what are your favourite four to eat? Draw below.

1. \_\_\_\_\_ 2. \_\_\_\_\_ 3. \_\_\_\_\_ 4. \_\_\_\_\_

--	--	--	--

#2 - If you were to only eat foods grown in your city and in the two cities nearest to your city, what would your dinner meal look like?  
Draw and Label in the plate below.



My Dinner:

**[D] - Fill in the Blanks:**

#1 - Three rivers we have in BC are:

1 \_\_\_\_\_

2 \_\_\_\_\_

3 \_\_\_\_\_

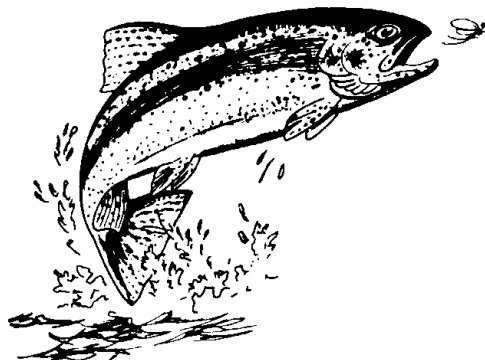
#2 - Way up north, in Fort Nelson, they raise \_\_\_\_\_  
cattle.

#3 - In the Georgia Strait, in southern BC, you will find:

1 \_\_\_\_\_

2 \_\_\_\_\_

3 \_\_\_\_\_



#4 - What kind of orchards is Okanagan Lake surrounded by?

---

#5 - The provincial bird of BC is called:

---

#6 - The floral emblem of BC is:



---

**[E] - True or False:**

\_\_\_\_\_ #1 - In Golden, BC they do a lot of Fish Farming in their lakes and rivers.

\_\_\_\_\_ #2 - They fish for salmon in Salmon Arm.

\_\_\_\_\_ #3 - There is not much farming happening in Revelstoke since it is surrounded by mountains.

**[F] - Answer in complete sentences:**

#1 - How can students help keep BC's farming and agriculture industry strong?

---

---

---

